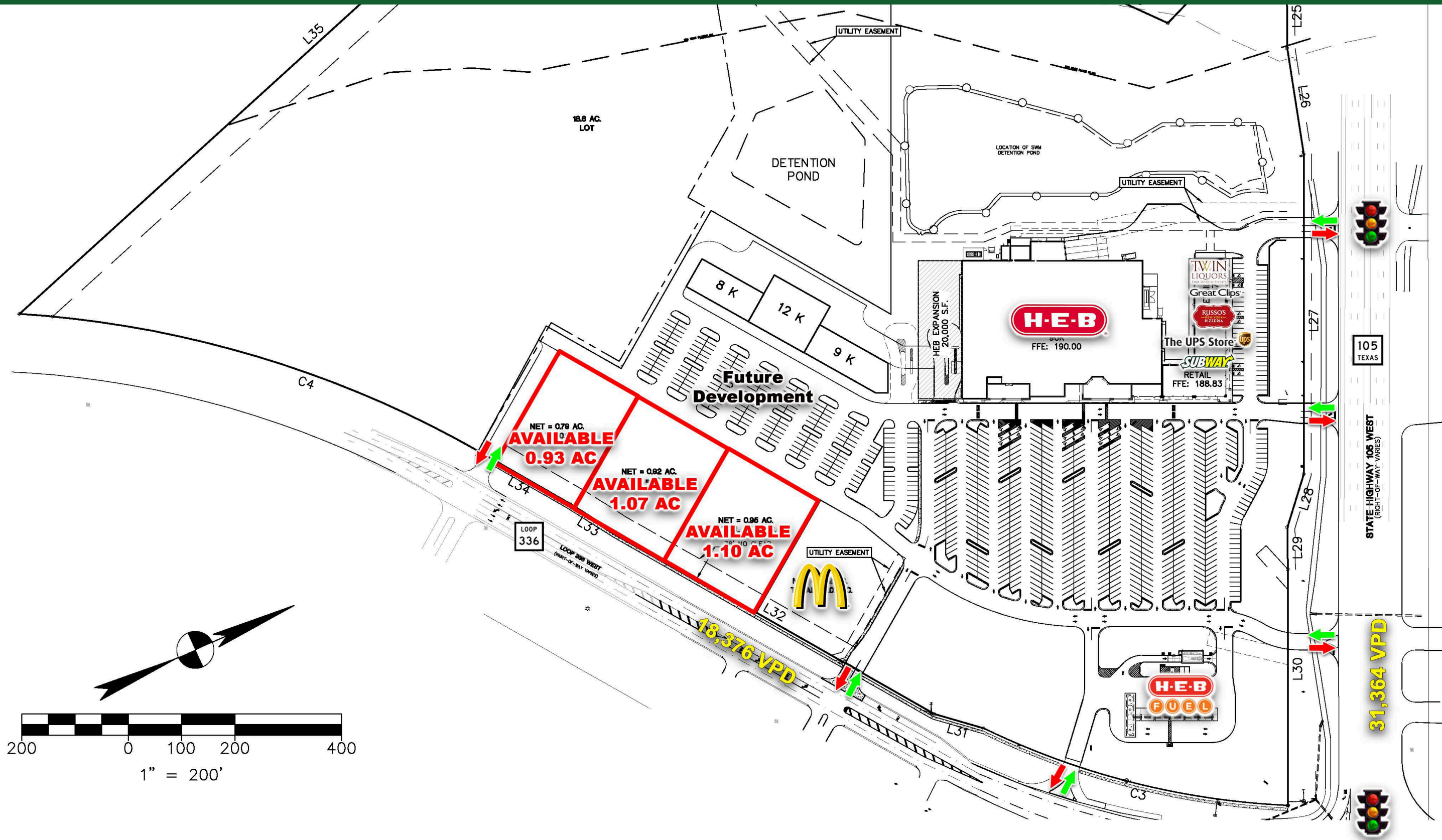


SITE PLAN

HEB ANCHORED PAD SITES

SWC of Hwy 105 & Loop 336 | Conroe, Texas



FOR MORE INFORMATION:

FOR MORE INFORMATION:

▶ **LILLY GOLDEN, CCIM**
713.664.3634
lgolden@evergreentx.com

www.evergreentx.com

▶ **BLAIR GOLDEN**
713.664.3634
bgolden@evergreentx.com

Evergreen Commercial Realty, LLC
Office: 713-664-3634
4615 Southwest Freeway, Suite 550
Houston, TX 77027



EVERGREEN
COMMERCIAL REALTY